



Ways of seeing Waves of being

A stronger promise

CURATED BY
RICKY LEE GORDON

THE POWER OF ART & HEALING

ART + DINNER + MUSIC + TALKS
SUNDAY, MARCH 5, 2023 * 7:30 - 11:00 PM
PLANTASIA: PUEBLA 120, ROMA NORTE, CDMX

ŚŪ
NYA
TĀ

RVCA
Artist
Network
Program



MUSA

PLANT
ASIA

MAIA
CONTEMPORARY

WAYS OF SEEING . WAVES OF BEING

Curated dining experience
by PLANTASIA

Menu x Arturo Mizrahi
& Braulio López (Plantasia)

Art Installation by Ricky Lee Gordon

Talks on the theme of
“The Power of Art & Healing” by:
Ricky Lee Gordon
Dr. Joyce Braverman MD
Sabino Guisu

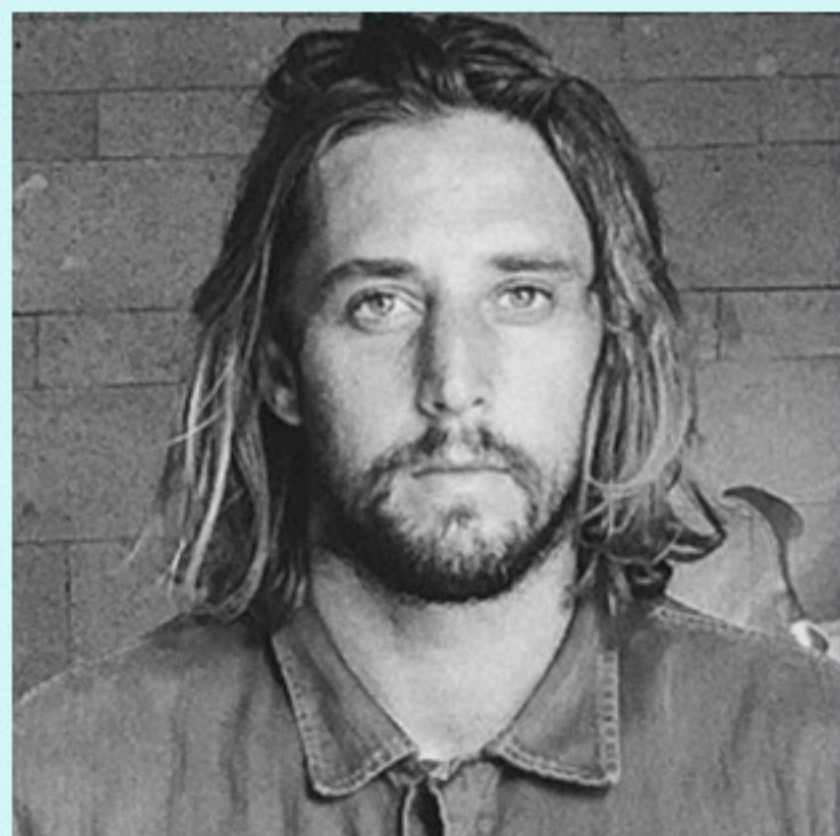
Music by:
Iye Yin Dae - Piano concert
La Chica - Live Set
Martha Van Straaten - DJ Set

\$1,250 MXN

WAYS OF SEEING . WAVES OF BEING

TALKS
BY

WAYS OF SEEING . WAVES OF BEING



RICKY LEE GORDON

ARTIST / CURATOR
SOUTH AFRICA

Born in Johannesburg, South Africa in 1984, Ricky Lee Gordon is an artist, curator with a studio practice which sees him paint natural landscapes on raw canvas using pigments and dyes found only in nature, a deeply personal process he likens to meditation for the manner in which it illuminates the interconnectedness of all life. In his public practice, Lee Gordon is known as one of “street art’s 11 greats” recognised by Natural Geographic bringing to light social and environmental issues with commissions for organisations such as Amnesty International, Greenpeace, and the United Nations.

Having moved to Cape Town in his twenties and founded /A WORD OF ART activism exhibition space, the Colour Ikwama school rejuvenation project and /Andpeople alternative advertising agency, Lee Gordon went on to live in Los Angeles where in 2015 he studied anatomy, classical drawing and painting at the Los Angeles Academy of Figurative Art. With the ocean remaining an ever-present source of inspiration, Lee Gordon is now based between Bali, Indonesia, and Sri Lanka, where he founded and built the artist’s residences and retreats Śūnyatā in 2021.

WAYS OF SEEING . WAVES OF BEING



DR. JOYCE BRAVERMAN MD

PSYCHEDELIC MEDICINE | MÉXICO

Medical doctor graduated from Anahuac University, worked as a pediatric surgical oncology assistant, consultant of strategic alliances for secondary childhood cancer prevention, medical research director of “Med Intelligence” a startup based in Israel aimed to do personalized medicine research, and content writer for “My child’s cancer”. Graduated from CIIS in Psychedelic Therapies and Research, activist and passionate about using psychedelics in the medical field. Particular interest in the psychoneuroimmunoendocrinology and the mind-body connection, also certified as an Ayurvedic yoga massage therapist. Currently studying functional medicine.



SABINO GUISU

ARTIST | MÉXICO

Sabino Guisu (Juchitán, Oaxaca, 1986) comes from a family of artisans dedicated to pottery; his creative training began through careful observation of nature, the rites and customs of the Zapotec culture, and the heritage of his artist father.

He studied Plastic Arts at the Faculty of Fine Arts of the UABJO. However, most of his creative vision has been self-taught. His pieces result from research in different fields, such as anthropology, religion, symbolic psychology, and art history.

His practice comes from a continuous reflection between nature, culture, and the sacred. His subject matter incorporates magic, the power of dreams, imagery, mysticism, and transcendental worldviews.

WAYS OF SEEING . WAVES OF BEING

MUSIC
BY

WAYS OF SEEING . WAVES OF BEING



IYE YIN DAE

PIANIST | USA

Iye Yin Dae is a self taught contemporary pianist from Philadelphia, PA, who has been playing for 15 years. Their many inspirations and experiences in life inform their sound and performance, creating a cinematically musical expression.

Iye Yin Dae transcends musical genres as ideas are formulated through melodies with the piano. The experience of playing piano for Iye Yin Dae is that of a personal journey. It's a time of freedom, vulnerability, and desire that drives the passion they emote creatively.



MARTHA VAN STRAATEN

SOUND WEAVER | BERLIN

The sound of Martha van Straaten (Laut & Luise, Berlin) can be described as the patchwork of a thousand joyful days in the sun. With fond love for colorful tunes from all over the world, she blends the musical treasures she discovers on her neverending journey.

When travelling to one of her shining performances, she dives deep into the local culture and absorbs the patterns, habits and sensual sensations of her surroundings just to translate all of these well collected influences into a multi-ethnic collage of sound. Martha van Straaten truly is a bright star in her genre: She brought her sound to countless countries on all five continents, happily performing in small-town clubs as well as on main stages of this planets biggest festivals, only to leave behind a most delighted audience.

WAYS OF SEEING . WAVES OF BEING



LA CHICA

MUSICIAN | FRANCE

On one side of the ocean, there is Latin America. The earth is intense and full of magic. On the other side, there is Paris and Belleville. A pluricultural, urban, and modern earth.

Through her music, La Chica reunites these two worlds, presenting a collage of textures and sounds, ingrained from her traditional heritage and in ux of modern in uences, breaking all modern social standards.

She created her universe around the piano and keyboard, naturally mixing her inspiration of the classics, her love of Debussy, and the profoundness of the pages of analogical synths.

Without a mask, this French/Venezuelian artist transmits a brusque state of emotion, oating between abstract thoughts and introspective poetry.

WAYS OF SEEING . WAVES OF BEING

CURATED
DINING
EXPERIENCE
BY PLANTASIA

Menu by Arturo Mizrahi
& Braulio López (Plantasia)

WAYS OF SEEING . WAVES OF BEING

5 COURSE TASTING MENU by PLANTASIA

Inspired by Mixtec mushrooms,
with an Asian twist

Mushroom Taco

Cremini, portobello, shitake,
Matsutake teriyaki + cashew butter reduction,
blue corn tortilla, sprouts

Wild greens & Heirloom Tomatoes Salad

Pickled wild mushrooms, beetroot cream,
chamomile honey

Forage Dashi

Shitake-kombu broth,
trumpet & portobello mushrooms

Mushroom Ragu Udon

Porcini bouillon, tomato, shitake, trumpet, portobello &
lobster mushrooms, pistachio parmesan

Reishi Cacao Foam

Reishi, pixtle gelatto, Papantla vanilla cream,
yellow corn, wheat & cocoa powder

Lavender Lemonade

Pairing of natural wines and botanical elixirs
(Not included)

Ways of seeing Waves of being

A stronger promise

CURATED BY
RICKY LEE GORDON

THE POWER OF ART & HEALING

To buy your entrance:



or purchase it directly at

MAIA Contemporary:
Colima 159, Roma Norte, CDMX, 06700

or

PLANTASIA:
Puebla 120, Roma Norte, CDMX, 06700